

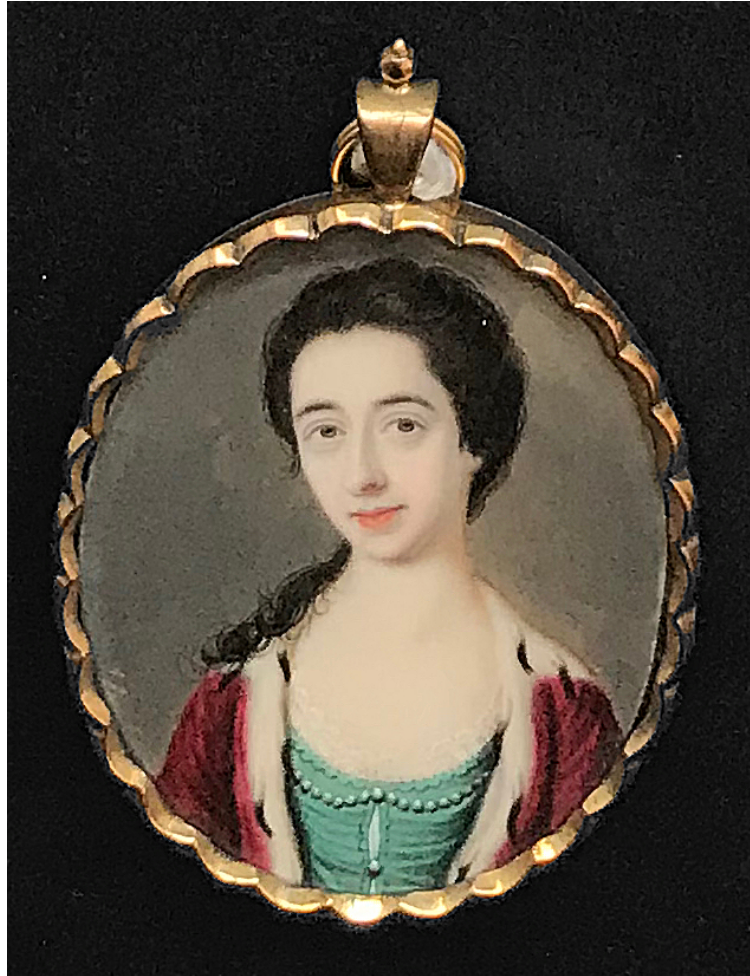
---

A portrait miniature of an unknown Noble Lady

SOLD

REF: 5009

---



## Short Description

---

Wearing ermine trimmed crimson robes and green dress trimmed with pearls over white underslip  
Signed on the obverse and dated J.Scouler, 1768, inscribed on the reverse backing paper by the artist  
'This/paper must/ not be taken off/ 1768 '

Scouler ranks amongst the acknowledged masters of the late 18th century - with Meyer, Cosway, Smart, Crosse, Cotes and Humphry. His early work, of which this is one example, is characterised by its cool colourings; note the face shaded in bluish tone, and the generous use of gum mixed with the paint, giving the appearance of painting in oil.

Scouler was born in Edinburgh and was recognised by the Society of Arts as early as 1755. He set up as a miniature painter in 1763 and was exhibiting at the RSA 1761-68 and at the RA 178-87.

## More Information

---

Year	1768.
Medium	Watercolour on ivory,
Signed	signed on the obverse and dated J.Scouler, 1768, inscribed on the reverse backing paper by the artist 'This/paper must/ not be taken off/ 1768 '
Provenance	Sotheby's, 13 July, 1982, lot 113 Sotheby's, 28 April, 1988, lot 93
Literature	Stephen Lloyd, Exhibition Catalogue, 1999, p. 56 and Exhibition Catalogue 2005, p. 60.
Exhibition	Raeburn's Rival: Archibald Skirving, Scottish National Portrait Gallery, 22/1 to 5/4 1999, no. 22 Portrait miniatures from the Merchiston Collection, Scottish National Portrait Gallery, 23/9 to 11/2 2005 no. 17.